

CONTENTS

Welcome Advanced 003

Technologies Products 011

- European Style Freestanding Oven 021

- South American-Style Freestanding Oven 033

- Venus Freestanding Oven 041

- North American Style Freestanding Oven 061



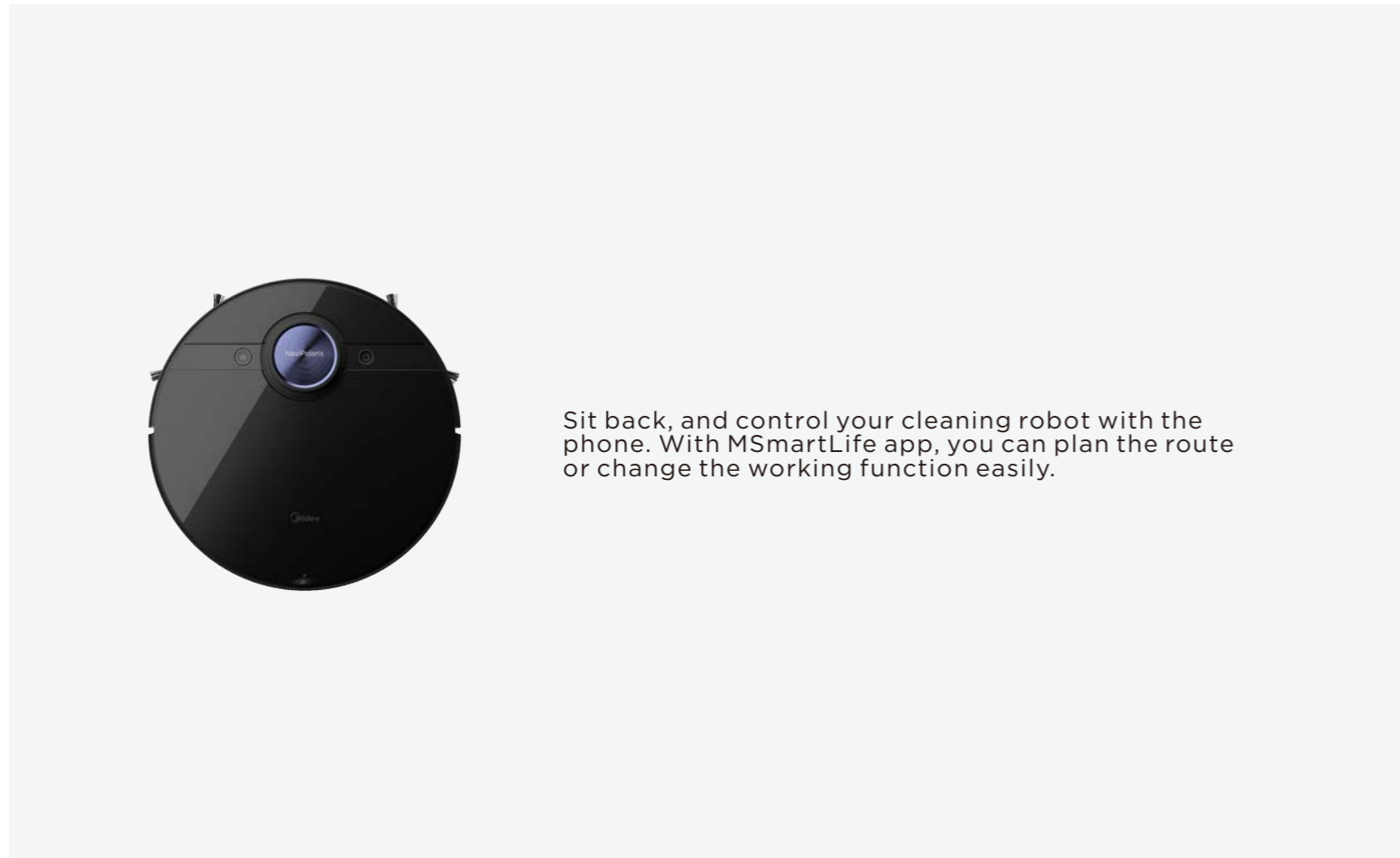


Control on-the-go

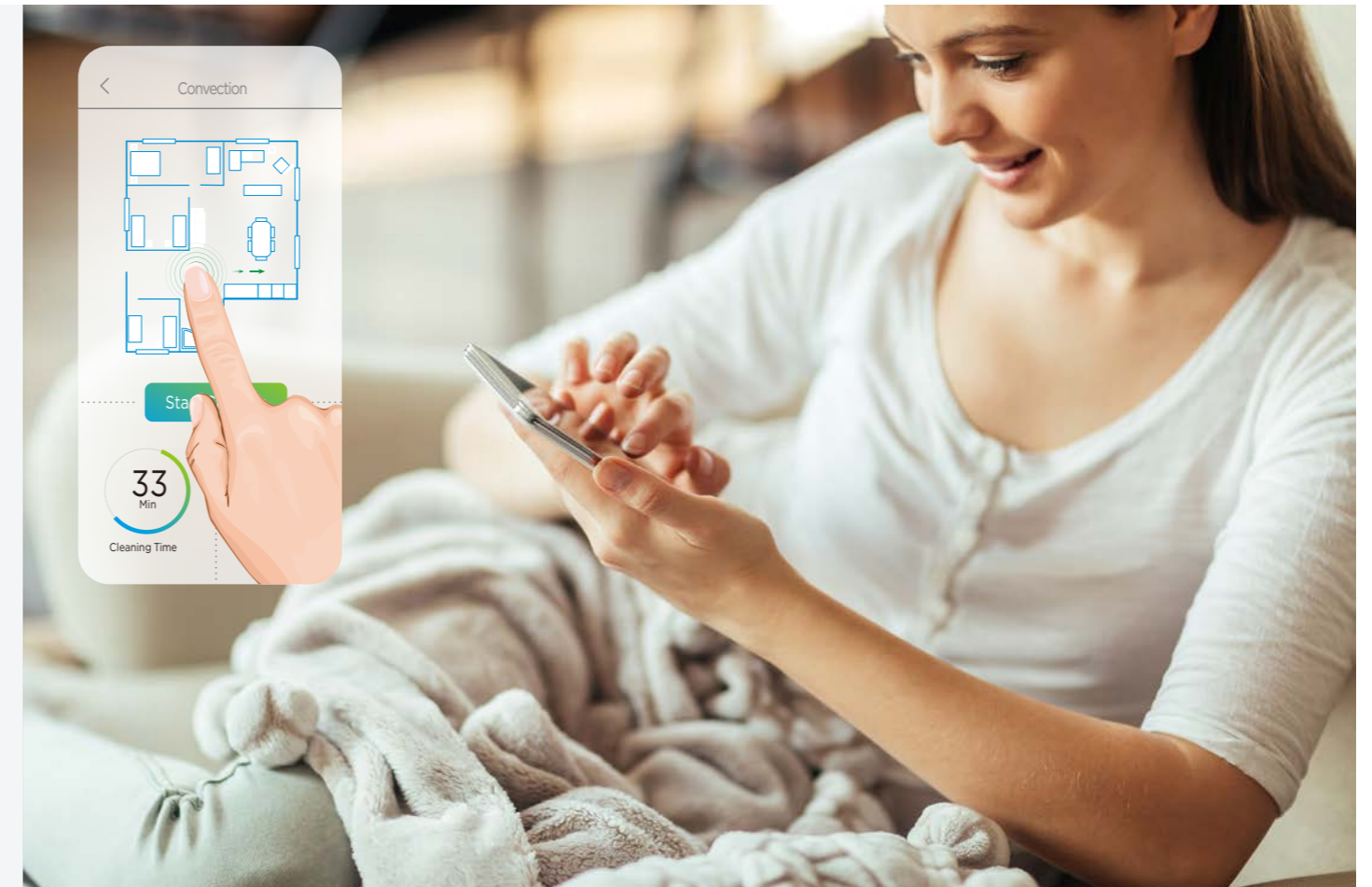
Imagine a world where all devices are connected and can communicate and interact freely with others.

Now, with IoT integration, you can monitor and adjust the temperature of the oven while you are enjoying time with your family; or start the cleaning robot while you are on your way back home - all can be done on the mobile devices.

Everything is under control within your finger tips.



Sit back, and control your cleaning robot with the phone. With MSmartLife app, you can plan the route or change the working function easily.



VoiSmart™ Technology

With Midea VoiSmart™ Technology, an advanced voice connection solution, you can talk naturally to the appliance without memorizing specific commands.

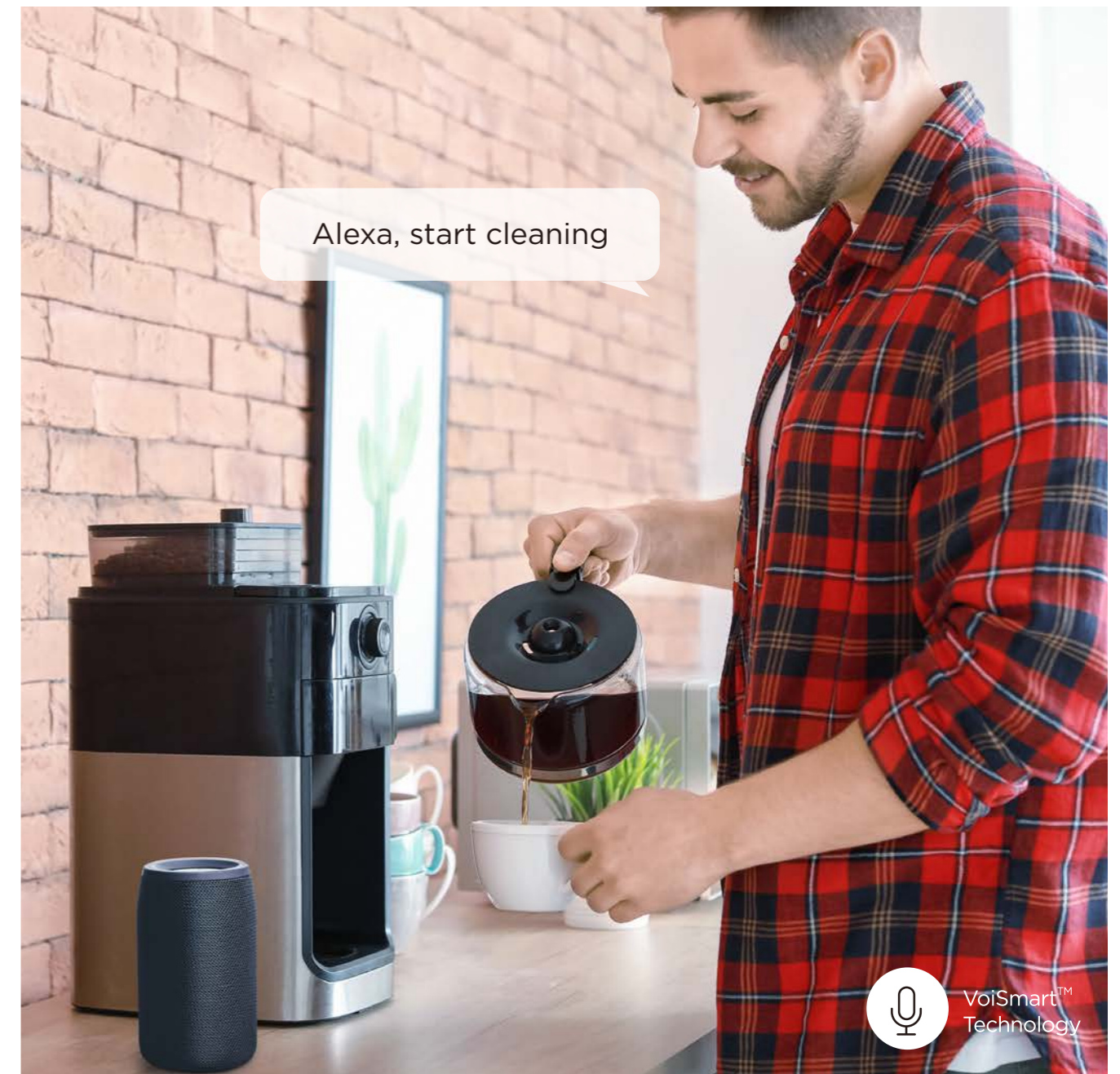
VoiSmart™ - Basic

Speak out the command or menu, the local-voice-activated appliances instantly understand what to do next.
No Internet, Bluetooth or any connection needed. All stored and happen locally.



VoiSmart™ - Plus

Seamlessly link with the AI assistant - Google Home or Alexa with the help of VoiSmart™ - Plus.
Talk naturally to the AI assistants, and your appliances will react intelligently: from reheating a pizza, making a popcorn, to start the cleaning robot.
No button, no knot, no hassle.



Product Advantages



Product Advantages

The Appearance



Sleek, smooth and stylish New handle design

Our newly designed handle decorates your kitchen with sleek and timeless look

Elegant, Efficient And Effortless New Knobs Style

Newly-designed knobs can be rotated with the decorating ring simultaneously, or on their own. Heat resistance, durable, and elegant.

Product Advantages

The Cooktop

IntelliKlean® Cooktop Panel

Our advanced coating material that makes cleaning even easier, and helps remain a long-lasting new-looking appliance.

Breezy Cleaning

Invented and patented by Midea, IntelliKlean® is a cutting-edge coating material that aims to offer a unprecedented cleaning experience. Formed by dense molecule, the material protects the surface reliably. Grease and residue can hardly stay. Simply clean the surface with a damp cloth, no arduous scrubbing and abrasive cleaners required.

Normal stainless steel panel



Stainless steel panel with IntelliKlean®



Lasting New-look

With outstanding chemical stability, IntelliKlean® coating material ensures the surface of the freestanding oven lasting shiny-looking, without corrosion or getting discolored even after long-time usage and cleaning.



Assuring Safety

IntelliKlean® coating material has food-graded safety, which passes the safety regulation of FDA, LFGB and GB.

Remarkably stable chemistry property can easily withstand temperature that is over 500°C with no harmful substance discharge.



Product Advantages

The Cooktop



Powerful

Triple crown burner
5kW triple crown burner with advanced flame system

The higher power triple crown burner cooks food rapidly without compromising their nutritional value. This time, we offer maximum 5kW power burner, you can boil up 3 liter of water in just 7 minutes*! Enjoy the advanced flame system in an aesthetical way: the flame floats just like a stream running, which in return remarkably improves the burning efficiency by concentrating the heat.

Gas consumption
8.3%* REDUCED



* Compare with Midea 3.3kW burner to boil 3 liter of water in a controlled condition. Data from Midea internal laboratory.



Safe Flame failure protection

The cooktop secures your safety with flame failure protection device. If the flame is accidentally extinguished, the device will block the gas flow to individual burner.



Easy Electronic ignition

Electronic ignition allows you to use only one hand for easy igniting, with remarkable 99.9% success rate. Detection device assures burner gets ignited once gas flows out.



Product Advantages

The Oven

Effortless, spotless Enamel cavity

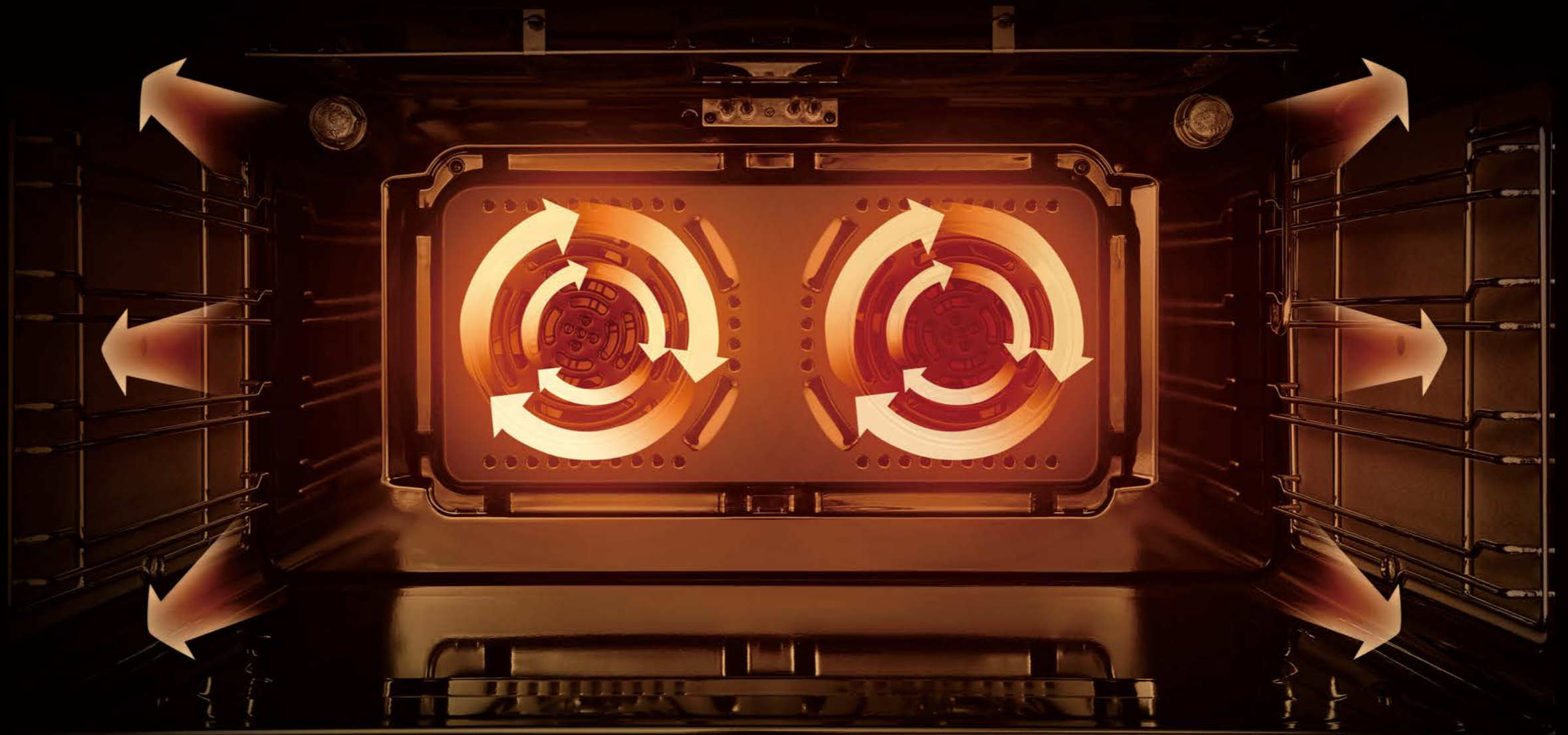
Enamel cavity has a smooth, contemporary grey look. Its glazed surface requires minimum cleaning effort. Don't forget it also owns outstanding scratch-resistant and anti-bacterial abilities.

Spacious Large cavity

The freestanding ovens are designed to provide increased capacity to accommodate even the largest dishes.

Evenly, tasty Convection fan

The efficient heating fan enables uniform cavity heating throughout.



European Style Freestanding Oven



European Style Freestanding Oven Lineup



20DME4H109

- Mechanical control
- Electric oven
- 4 electric hotplates
- Multifunction oven with 9 heating modes
- Enamel door
- Pull out drawer
- Alloy handle



20DME4R109

- Mechanical control
- Electric oven
- 4 ceramic hobs
- Multifunction oven with 9 heating modes
- Enamel door
- Pull out drawer
- Alloy handle



24DME4I113

- Mechanical control
- Electric oven
- 4 inductions
- Multifunction oven with 9 heating modes
- Enamel door
- Pull out drawer
- Alloy handle



24DME4R109

- Mechanical control
- Electric oven
- 4 ceramic hobs
- Multifunction oven with 9 heating modes
- Enamel door
- Pull out drawer
- Alloy handle



24DAE4I113

- Electrical control
- Electric oven
- 4 inductions
- Multifunction oven with 9 heating modes
- Full glass door
- Pull out drawer
- Alloy handle



24DME4H109

- Mechanical control
- Electric oven
- 4 electric hotplates
- Multifunction oven with 9 heating modes
- Enamel door
- Pull out drawer
- Alloy handle



24DAE3I109

- Electrical control
- Electric oven
- 3 Inductions
- Multifunction oven with 11 heating modes
- Enamel door
- Fixed drawer
- Alloy handle
- Pyrolytic-Self Cleaning



24EME4R106

- Mechanical control
- Electric oven
- 4 Ceramic hobs
- Multifunction oven with 3 heating modes
- Full glass door
- Alloy handle

European Style Freestanding Oven Lineup



24DMS4G113

- Mechanical control
- Electric oven
- 4 gas burners
- Multifunction oven with 9 heating modes
- Enamel door
- Pull out drawer
- Alloy handle



36QMS5GP48

- Mechanical control
- Electric oven
- 5 gas burners
- Cooktop flame extinguish protection
- One-hand electric ignition
- Oven thermostat
- Multifunction oven with 9 heating modes
- Enamel door
- Fold down drawer
- Alloy handle



36QME5RP48

- Mechanical control
- Electric oven
- 5 ceramic hobs
- Oven thermostat
- Multifunction oven with 9 heating modes
- Full glass door
- Fold down drawer
- Alloy handle



36QMG5G048

- Mechanical control
- Gas oven
- 5 gas burners
- Cooktop flame extinguish protection
- One-hand electric ignition
- Oven thermostat
- Full glass door
- Fold down drawer
- Alloy handle



36QMS5GP62

- Mechanical control
- Electric oven
- 5 gas burners
- Cooktop flame extinguish protection
- One-hand electric ignition
- Oven thermostat
- Multifunction oven with 9 heating modes
- Full glass door
- Fold down drawer
- Alloy handle



36QMG5GP48

- Mechanical control
- Gas oven
- 5 gas burners
- Cooktop flame extinguish protection
- One-hand electric ignition
- Oven thermostat
- Full glass door
- Fold down drawer
- Alloy handle



Model	20DME4H109	20DME4R109
Platform	50*60: EU	50*60: EU
Color	White	White
Control types	Mechanical control	Mechanical control
Cooktop		
Hob type/No. of burner	Electric hotplates/4	Ceramic hob/4
Ignition	-	-
Oven		
Oven type	Electric oven	Electric oven
Cavity		
Enamel interior	●	●
Molded rack support	●	●
Multi-rack support	●	●
Cast iron pan supports	-	-
Catalytic liners (irreplaceable)	○	○
Cover plate & Oven door		
Glass cover plate/backsplash	●	●
Enamel door	-	-
Full glass door	●	●
Removable door plate		
Convenience and safety		
Mechanical timer/elctetric timer/digital timer	●/-/-	●/-/-
Pull out drawer/fixed drawer/flap down drawer	●/-/-	●/-/-
Adjustable feet	●	●
Oven lamp	●	●
Oven thermostat	-	-
Cooktop flame extinguish protection	-	-
Handle material	Alloy	Alloy
Accessories		
Enamel baking tray	○	○
Rotisserie spit	●	●
Technical data		
Oven dimensions in mm (WxDxH)	500x650x850	500*650*850
Packing dimensions in mm (WxDxH)	540x700x910	540*700*910
Loading quantity (20'/40'/40 HQ)	66/ 142/ 190	66/142/190



Model	24DAE4I113	24DME4H109	24DME4I113
Platform	60*60: EU	60*60: EU	60*60: EU
Color	White	Stainless steel	Stainless steel
Control types	Electrical control	Mechanical control	Mechanical control
Cooktop			
Hob type/No. of burner	Induction/4	Electric hotplates/4	Induction/4
Ignition	-	-	-
Oven			
Oven type	Electric oven	Electric oven	Electric oven
Cavity			
Enamel interior	●	●	●
Molded rack support	●	●	●
Multi-rack support	●	●	●
Cast iron pan supports	-	-	-
Catalytic liners (irreplaceable)	○	○	○
Cover plate & Oven door			
Glass cover plate/backsplash	-	●	●
Enamel door	●	-	-
Full glass door	●	●	●
Removable door plate			
Convenience and safety			
Mechanical timer/elctetric timer/digital timer	-/●/-	●/-/-	●/-/-
Pull out drawer/fixed drawer/flap down drawer	●/-/-	●/-/-	●/-/-
Adjustable feet	●	●	●
Oven lamp	●	●	●
Oven thermostat	-	-	-
Cooktop flame extinguish protection	-	-	-
Handle material	Alloy	Alloy	Alloy
Accessories			
Enamel baking tray	○	○	○
Rotisserie spit	●	●	●
Technical data			
Oven dimensions in mm (WxDxH)	600*600*850	600*600*850	600*600*850
Packing dimensions in mm (WxDxH)	640*700*910	640*700*910	640*700*910
Loading quantity (20'/40'/40 HQ)	54/108/150	54/108/150	54/108/150



Model	24DME4R109	24DMS4G113	24DAE3I109
Platform	60*60: EU	60*60: EU	60*60: EU
Color	Stainless steel	Stainless steel	White
Control types	Mechanical control	Mechanical control	Electrical control
Cooktop			
Hob type/No. of burner	Ceramic hob/4	Gas burner/4	Inductions/3
Ignition	-	-	-
Oven			
Oven type	Electric oven	Electric oven	Electric oven
Cavity			
Enamel interior	●	●	●
Molded rack support	●	●	●
Multi-rack support	●	●	●
Cast iron pan supports	-	-	-
Catalytic liners (irreplaceable)	○	○	-
Cover plate & Oven door			
Glass cover plate/backsplash	●	●/-	-
Enamel door	-	●	●
Full glass door	●	-	-
Removable door plate		●	●
Convenience and safety			
Mechanical timer/electric timer/digital timer	●/-/-	●/-/-	-/●/-
Pull out drawer/fixed drawer/flap down drawer	●/-/-	●/-/-	-/●/-
Adjustable feet	●	●	●
Oven lamp	●	●	●
Oven thermostat	-	-	-
Cooktop flame extinguish protection	-	-	-
Handle material	Alloy	Alloy	Alloy
Accessories			
Enamel baking tray	○	○	○
Rotisserie spit	●	●	-
Technical data			
Oven dimensions in mm (WxDxH)	600*600*850	600*600*850	600*600*850
Packing dimensions in mm (WxDxH)	640*700*910	640*700*910	640*700*910
Loading quantity (20'/40'/40 HQ)	54/108/150	54/108/150	54/108/150

Model	24EME4R106
Platform	90*60: E U
Color	Black
Control types	Mechanical control
Cooktop	
Hob type/No. of burner	Ceramic hob/4
Ignition	-
Oven	
Oven type	Electric oven
Cavity	
Enamel interior	●
Molded rack support	●
Multi-rack support	-
Cast iron pan supports	●
Catalytic liners (irreplaceable)	-
Cover plate & Oven door	
Glass cover plate/backsplash	-
Enamel door	-
Full glass door	●
Removable door plate	●
Convenience and safety	
Mechanical timer/electric timer/digital timer	-/-/● (5 buttons)
Pull out drawer/fixed drawer/flap down drawer	-/-/-
Adjustable feet	●
Oven lamp	●
Oven thermostat	-
Cooktop flame extinguish protection	-
Handle material	Alloy
Accessories	
Enamel baking tray	○
Rotisserie spit	
Technical data	
Oven dimensions in mm (WxDxH)	898x598x600
Packing dimensions in mm (WxDxH)	708*657*1002
Loading quantity (20'/40'/40 HQ)	45/ 108/ 140



Model	36QMS5GP48	36QMS5GP62	36QTE4IP48
Platform	90*60: ME	90*60: ME	90*60: ME
Color	Stainless steel	Stainless steel	Stainless steel
Control types	Mechanical control	Mechanical control	Touch control
Cooktop			
Hob type/No. of burner	Gas burner/5	Gas burner/5	Induction/4
Ignition	One-hand electric ignition	One-hand electric ignition	-
Oven			
Oven type	Electric oven	Electric oven	Electric oven
Cavity			
Enamel interior	●	●	●
Molded rack support	-	-	-
Multi-rack support	●	●	●
Cast iron pan supports	●	●	-
Catalytic liners (irreplaceable)	○	○	○
Cover plate & Oven door			
Glass cover plate/backsplash	-/●	-/●	-/●
Enamel door	-	-	-
Full glass door	●	●	●
Removable door plate	●	●	●
Convenience and safety			
Mechanical timer/electric timer/digital timer	-/-/● (3 buttons)	-/-/● (3 buttons)	-/-/● (touch)
Pull out drawer/fixed drawer/flap down drawer	-/-/●	-/-/●	-/-/●
Adjustable feet	●	●	●
Oven lamp	●	●	●
Oven thermostat	●	●	●
Cooktop flame extinguish protection	●	●	-
Handle material	Alloy	Alloy	Alloy
Accessories			
Enamel baking tray	○	○	○
Rotisserie spit	●	●	●
Technical data			
Oven dimensions in mm (WxDxH)	895x600x769	895x600x769	895x600x769
Packing dimensions in mm (WxDxH)	956*687*845	956*687*845	956*687*845
Loading quantity (20'/40'/40 HQ)	40/ 82/ 126	40/ 82/ 126	40/ 82/ 126



Model	36QME5RP48	36QMG5G048	36QMG5GP48
Platform	90*60: ME	90*60: ME	90*60: ME
Color	Stainless steel	Stainless steel	Stainless steel
Control types	Mechanical control	Mechanical control	Mechanical control
Cooktop			
Hob type/No. of burner	Ceramic hob/5	Gas burner/5	Gas burner/5
Ignition	-	One-hand electric ignition	One-hand electric ignition
Oven			
Oven type	Electric oven	Gas oven	Gas oven
Cavity			
Enamel interior	●	●	●
Molded rack support	-	-	-
Multi-rack support	●	●	●
Cast iron pan supports	-	●	●
Catalytic liners (irreplaceable)	○	○	○
Cover plate & Oven door			
Glass cover plate/backsplash	-/●	●/-	●/-
Enamel door	-	-	-
Full glass door	●	●	●
Removable door plate	●	●	●
Convenience and safety			
Mechanical timer/electric timer/digital timer	-/-/● (3 buttons)	●/-/-	●/-/-
Pull out drawer/fixed drawer/flap down drawer	-/-/●	-/-/●	-/-/●
Adjustable feet	●	●	●
Oven lamp	●	●	●
Oven thermostat	●	●	●
Cooktop flame extinguish protection	-	●	●
Handle material	Alloy	Alloy	Alloy
Accessories			
Enamel baking tray	○	○	○
Rotisserie spit	●	●	●
Technical data			
Oven dimensions in mm (WxDxH)	895x600x769	895x600x769	895x600x769
Packing dimensions in mm (WxDxH)	956*687*845	956*687*845	956*687*845
Loading quantity (20'/40'/40 HQ)	40/ 82/ 126	40/ 82/ 126	40/ 82/ 126

South American Style Freestanding Oven



Customized Designs for Localized Desire

VENUS FREESTANDING OVEN

Midea Venus freestanding oven is a new platform that is customized for Latino market. Based on our years of research on the local markets, we carefully improved every details to meet the specific needs of our customers, for the sake of offering a best cooking solution.



Extended Cooktop Area

Extended cooking area on the cooktop allows you to prepare multiple dishes at the same time

Powerful Burners Perfectly Arranged

Equipped with up to 6 powerful burners that offers flexible power levels, Venus considerably positioned them with rational arrangement: no tangled pots and pans, just handy cookware.



Enlarged Oven Capacity

Larger oven capacity offers more possibilities for cooking, or storage. Satisfying even the larger family.



Dual-layer Oven Door

The dual-layer oven door can be easily removed for better cleaning. The glass can be separated by only bare hands, making cleaning a breeze.



Venus Freestanding Oven Lineup



30SMG5G066

- Mechanical control
- Gas oven
- 5 gas burners
- Two-hand electric ignition
- Glass cover plate
- Oven thermostat
- Fold down drawer
- Alloy + plastic handle



30SMG5G068

- Mechanical control
- Gas oven
- 5 gas burners
- Two-hand electric ignition
- Glass cover plate
- Oven thermostat
- Fold down drawer
- Alloy handle



30SMG6G066

- Mechanical control
- Gas oven
- 6 gas burners
- Two-hand electric ignition
- Backsplash
- Oven thermostat (optional)
- Fixed drawer
- Alloy + plastic handle



30SMG6G068

- Mechanical control
- Gas oven
- 6 gas burners
- Two-hand electric ignition
- Backsplash
- Oven thermostat (optional)
- Fixed drawer
- Alloy handle





Model	30SMG5G062	30SMG5G068	30SMG6G062
Platform	30 inch: SA	30 inch: SA	30 inch: SA
Color	Stainless steel+ Silver	Stainless steel+ Silver	Stainless steel+ Silver
Control types	Mechanical control	Mechanical control	Mechanical control
Cooktop			
Hob type/No. of burner	Gas burner/5	Gas burner/5	Gas burner/6
Ignition	Two-hand electric ignition	Two-hand electric ignition	Two-hand electric ignition
Oven			
Oven type	Gas oven	Gas oven	Gas oven
Cavity			
Enamel interior	●	●	●
Molded rack support	●	●	●
Multi-rack support	●	●	●
Cast iron pan supports	●	●	○
Cover plate & Oven door			
Glass cover plate/metal cover plate/backsplash	●/-/-	●/-/-	-/-/●
Full glass door	●	●	●
Removable door plate	●	●	●
Convenience and safety			
Mechanical timer/elctetric timer/digital timer	●/-/-	●/-/-	○/-/-
Pull out drawer/fixed drawer/fold down drawer	-/-/●	-/-/●	-/●/-
Adjustable feet	●	●	●
Oven lamp	2	2	2
Oven thermostat	●	●	○
Handle material	Alloy + Plastic	Alloy	Alloy + Plastic
Accessories			
Rotisserie spit	●	●	-
Technical data			
Product dimensions in mm (WxDxH)	767*674*936.5	767*674*936.5	767*674*936.5
Packing dimensions in mm (WxDxH)	820*722*974.6	820*722*974.8	820*722*974.5
Loading quantity (20/40/40HQ)	46/92/120	46/92/120	46/92/120



Model	30SMG6G068	30SMG6G061	30SMG6G066
Platform	30 inch: SA	30 inch: SA	30 inch: SA
Color	Stainless steel+ Silver	Stainless steel+ Silver	Stainless steel+ Silver
Control types	Mechanical control	Mechanical control	Mechanical control
Cooktop			
Hob type/No. of burner	Gas burner/6	Gas burner/6	Gas burner/6
Ignition	Two-hand electric ignition	Two-hand electric ignition	Two-hand electric ignition
Oven			
Oven type	Gas oven	Gas oven	Gas oven
Cavity			
Enamel interior	●	●	●
Molded rack support	●	●	●
Multi-rack support	●	●	●
Cast iron pan supports	○	○	○
Cover plate & Oven door			
Glass cover plate/metal cover plate/backsplash	-/-/●	-/-/●	-/-/●
Full glass door	●	●	●
Removable door plate	●	●	●
Convenience and safety			
Mechanical timer/elctetric timer/digital timer	○/-/-	○/-/-	○/-/-
Pull out drawer/fixed drawer/fold down drawer	-/●/-	-/●/-	-/●/-
Adjustable feet	●	●	●
Oven lamp	2	2	2
Oven thermostat	○	○	○
Handle material	Alloy	Alloy	Alloy
Accessories			
Rotisserie spit	-	-	-
Technical data			
Product dimensions in mm (WxDxH)	767*674*936.5	767*674*936.5	767*674*936.5
Packing dimensions in mm (WxDxH)	820*722*974.7	820*722*974.7	820*722*974.7
Loading quantity (20/40/40HQ)	46/92/120	46/92/120	46/92/120

South American Style Freestanding Oven Lineup



20AMG4G001

- Mechanical control
- Gas oven
- 4 gas burners
- Cooktop flame extinguish protection
- Two-hand electric ignition
- Glass cover plate
- Oven thermostat
- Enamel door
- Fixed drawer
- Plastic handle



20AMG4G005

- Mechanical control
- Gas oven
- 4 gas burners
- Cooktop flame extinguish protection
- Two-hand electric ignition
- Glass cover plate
- Oven thermostat
- Enamel door
- Fixed drawer
- Plastic handle



20BMG4G057

- Mechanical control
- Gas oven
- 4 gas burners
- Two-hand electric ignition
- Glass cover plate
- Enamel door
- Fixed drawer
- Painting handle



20BMG4G059

- Mechanical control
- Gas oven
- 4 gas burners
- Two-hand electric ignition
- Backsplash
- Enamel door
- Fixed drawer
- Painting handle



20AMG4G037

- Mechanical control
- Gas oven
- 4 gas burners
- Cooktop flame extinguish protection
- Two-hand electric ignition
- Backsplash
- Oven thermostat
- Enamel door
- Fixed drawer
- Bakelite handle



20BMG4G007

- Mechanical control
- Gas oven
- 4 gas burners
- Two-hand electric ignition
- Glass cover plate
- Oven thermostat
- Enamel door
- Fixed drawer
- Painting handle



20BMG4P007

- Mechanical control
- Gas oven
- 2 gas burners + 2 hotplates
- Two-hand electric ignition
- Metal cover
- Enamel door
- Fixed drawer
- Painting handle



20BMG4Q007

- Mechanical control
- Gas oven
- 3 gas burner + 1 hotplate
- Two-hand electric ignition
- Metal cover
- Enamel door
- Fixed drawer
- Painting handle

South American Style Freestanding Oven Lineup



24AMG4G001

- Mechanical control
- Gas oven
- 4 gas burners
- Cooktop flame extinguish protection
- Two-hand electric ignition
- Glass cover plate
- Oven thermostat
- Enamel door
- Fixed drawer
- Painting handle



24AMG4G005

- Mechanical control
- Gas oven
- 4 gas burners
- Cooktop flame extinguish protection
- Two-hand electric ignition
- Glass cover plate
- Oven thermostat
- Enamel door
- Fold down drawer
- Painting handle



24BMG4G057

- Mechanical control
- Gas oven
- 4 gas burners
- Two-hand electric ignition
- Glass cover plate
- Enamel door
- Fixed drawer
- Painting handle



24BMG4G059

- Mechanical control
- Gas oven
- 4 gas burners
- Cooktop flame extinguish protection
- Two-hand electric ignition
- Glass cover plate
- Enamel door
- Fix drawer
- Painting handle



24AMG4G037

- Mechanical control
- Gas oven
- 4 gas burners
- Two-hand electric ignition
- Glass cover plate
- Oven thermostat
- Enamel door
- Fold down drawer
- Bakelite handle



24AMG4G054

- Mechanical control
- Gas oven
- 4 gas burners
- Cooktop flame extinguish protection
- Two-hand electric ignition
- Glass cover plate
- Oven thermostat
- Enamel door
- Fold down drawer
- Alloy handle

South American Style Freestanding Oven Lineup



30AMG5G001

- Mechanical control
- Gas oven
- 5 gas burners
- Cooktop flame extinguish protection
- Two-hand electric ignition
- Glass cover plate
- Oven thermostat
- Enamel door
- Fold down drawer
- Painting handle



30AMG5G005

- Mechanical control
- Gas oven
- 5 gas burners
- Cooktop flame extinguish protection
- Two-hand electric ignition
- Glass cover plate
- Oven thermostat
- Enamel door
- Fold down drawer
- Painting handle



30AMG5G027

- Mechanical control
- Gas oven
- 5 gas burners
- Cooktop flame extinguish protection
- Two-hand electric ignition
- Glass cover plate
- Oven thermostat
- Enamel door
- Fold down drawer
- Bakelite handle



30AMG5G054

- Mechanical control
- Gas oven
- 5 gas burners
- Cooktop flame extinguish protection
- Two-hand electric ignition
- Glass cover plate
- Oven thermostat
- Enamel door
- Fold down drawer
- Alloy handle



30AMG5G009

- Mechanical control
- Gas oven
- 5 gas burners
- Cooktop flame extinguish protection
- Two-hand electric ignition
- Glass cover plate
- Oven thermostat
- Enamel door
- Fold down drawer
- Bakelite handle



36QTE4IP48

- Touch control
- Electric oven
- 4 inductions
- Oven thermostat
- Multifunction oven with 9 heating modes
- Full glass door
- Fold down drawer
- Alloy handle

South American Style Freestanding Oven Lineup



36LMG5G022

- Mechanical control
- Gas oven
- 5 gas burners
- Cooktop flame extinguish protection
- Two-hand electric ignition
- Glass cover plate
- Oven thermostat
- Enamel door
- Fold down drawer
- Stainless steel handle



36LMG5G024

- Mechanical control
- Gas oven
- 5 gas burners
- Cooktop flame extinguish protection
- Two-hand electric ignition
- Glass cover plate
- Oven thermostat
- Enamel door
- Fold down drawer
- Stainless steel handle



36LMG5G028

- Mechanical control
- Gas oven
- 5 gas burners
- Cooktop flame extinguish protection
- Two-hand electric ignition
- Glass cover plate
- Oven thermostat
- Enamel door
- Fold down drawer
- Stainless steel handle



36LMG5G030

- Mechanical control
- Gas oven
- 5 gas burners
- Cooktop flame extinguish protection
- Two-hand electric ignition
- Glass cover plate
- Oven thermostat
- Enamel door
- Fold down drawer
- Stainless steel handle





Model	20AMG4G001	20AMG4G005	20AMG4G037
Platform	20 inch: SA	20 inch: SA	20 inch: SA
Color	Stainless steel+ Silver	Stainless steel+ Silver	Stainless steel
Control types	Mechanical control	Mechanical control	Mechanical control
Cooktop			
Hob type/No. of burner	Gas burner/4	Gas burner/4	Gas burner/4
Ignition	Two-hand electric ignition	Two-hand electric ignition	Two-hand electric ignition
Oven			
Oven type	Gas oven	Gas oven	Gas oven
Cavity			
Enamel interior	●	●	●
Molded rack support	●	●	●
Multi-rack support	●	●	●
Cast iron pan supports	○	○	○
Catalytic liners (irreplaceable)	○	○	○
Cover plate & Oven door			
Glass cover plate/metal cover plate/backsplash	●/-/-	●/-/-	-/-/●
Enamel door	●	●	●
Full glass door	-	-	-
Removable door plate	●	●	●
Convenience and safety			
Mechanical timer/electric timer/digital timer	●/-/-	●/-/-	●/-/-
Pull out drawer/fixed drawer/fold down drawer	-/●/-	-/●/-	-/●/-
Adjustable feet	-	-	-
Oven lamp	●	●	●
Oven thermostat	●	●	●
Flame failure protection	●	●	●
Handle material	Plastic	Plastic	Bakelite
Accessories			
Enamel baking tray	○	○	○
Rotisserie spit	●	●	●
Technical data			
Product dimensions in mm (WxDxH)	520*580*900	520*580*900	520*580*900
Packing dimensions in mm (WxDxH)	560*605*985	560*605*985	560*605*985
Loading quantity (20'/40'/40 HQ)	76/ 160/ 206	76/ 160/ 206	76/ 160/ 206



Model	20BMG4G007	20BMG4G057	20BMG4G059
Platform	50*50: SA (20B)	50*50: SA (20B)	50*50: SA (20B)
Color	Stainless steel	Stainless steel	Stainless steel
Control types	Mechanical control	Mechanical control	Mechanical control
Cooktop			
Hob type/No. of burner	Gas burner/4	Gas burner/4	Gas burner/4
Ignition	Two-hand electric ignition	Two-hand electric ignition	Two-hand electric ignition
Oven			
Oven type	Gas oven	Gas oven	Gas oven
Cavity			
Enamel interior	●	●	●
Molded rack support	●	●	●
Multi-rack support	●	●	●
Cast iron pan supports	○	○	○
Catalytic liners (irreplaceable)	-	-	○
Cover plate & Oven door			
Glass cover plate/metal cover plate/backsplash	-/-/●	●/-/-	-/-/●
Enamel door	●	●	●
Full glass door	-	-	-
Removable door plate	●	●	●
Convenience and safety			
Mechanical timer/electric timer/digital timer	●/-/-	●/-/-	●/-/-
Pull out drawer/fixed drawer/fold down drawer	-/●/-	-/●/-	-/●/-
Adjustable feet	●	●	●
Oven lamp	●	●	●
Oven thermostat	-	-	-
Flame failure protection	-	-	-
Handle material	Painting	Painting	Painting
Accessories			
Enamel baking tray	○	○	○
Rotisserie spit	●	●	●
Technical data			
Product dimensions in mm (WxDxH)	495*556*850	495*556*850	495*556*850
Packing dimensions in mm (WxDxH)	540*575*885	540*575*885	540*575*885
Loading quantity (20'/40'/40 HQ)	104/228/262	104/228/262	104/228/262



Model	20BMG4P007	20BMG4Q007
Platform	50*50: SA (20B)	50*50: SA (20B)
Color	Stainless steel	Stainless steel
Control types	Mechanical control	Mechanical control
Cooktop		
Hob type/No. of burner	Gas burner/2 + Hot plate/2	Gas burner/3 + Hot plate/1
Ignition	Two-hand electric ignition	Two-hand electric ignition
Oven		
Oven type	Gas oven	Gas oven
Cavity		
Enamel interior	●	●
Molded rack support	●	●
Multi-rack support	●	●
Cast iron pan supports	-	-
Catalytic liners (irreplaceable)	-	-
Cover plate & Oven door		
Glass cover plate/metal cover plate/backsplash	-/●/-	-/●/-
Enamel door	●	●
Full glass door	-	-
Removable door plate	●	●
Convenience and safety		
Mechanical timer/elctetric timer/digital timer	●/-/-	●/-/-
Pull out drawer/fixed drawer/fold down drawer	-/●/-	-/●/-
Adjustable feet	●	●
Oven lamp	●	●
Oven thermostat	-	-
Flame failure protection	-	-
Handle material	Painting	Painting
Accessories		
Enamel baking tray	○	○
Rotisserie spit	-	-
Technical data		
Product dimensions in mm (WxDxH)	495*556*850	495*556*850
Packing dimensions in mm (WxDxH)	540*575*885	540*575*885
Loading quantity (20'/40'/40 HQ)	104/228/262	104/228/262



Model	24AMG4G001	24AMG4G005	24AMG4G037
Platform	24 inch: SA	24 inch: SA	24 inch: SA
Color	Stainless steel	Stainless steel	Stainless steel
Control types	Mechanical control	Mechanical control	Mechanical control
Cooktop			
Hob type/No. of burner	Gas burner/4	Gas burner/4	Gas burner/4
Ignition	Two-hand electric ignition	Two-hand electric ignition	Two-hand electric ignition
Oven			
Oven type	Gas oven	Gas oven	Gas oven
Cavity			
Enamel interior	●	●	●
Molded rack support	●	●	●
Multi-rack support	●	●	●
Cast iron pan supports	○	○	○
Catalytic liners (irreplaceable)	○	○	-
Cover plate & Oven door			
Glass cover plate/metal cover plate/backsplash	●/-/-	●/-/-	●/-/-
Enamel door	●	●	●
Full glass door	-	-	-
Removable door plate	●	●	●
Convenience and safety			
Mechanical timer/elctetric timer/digital timer	●/-/-	●/-/-	●/-/-
Pull out drawer/fixed drawer/fold down drawer	-/●/-	-/-/●	-/-/●
Adjustable feet	-	-	-
Oven lamp	●	●	●
Oven thermostat	●	●	●
Flame failure protection	●	●	-
Handle material	Painting	Painting	Bakelite
Accessories			
Enamel baking tray	○	○	○
Rotisserie spit	●	●	-
Technical data			
Product dimensions in mm (WxDxH)	600*570*810	600*580*900	600*580*900
Packing dimensions in mm (WxDxH)	635*575*878	640*605*985	640*605*985
Loading quantity (20'/40'/40 HQ)	72/ 144/ 214	54/114/156	54/114/156



Model	24AMG4G054	24BMG4G057	24BMG4G059
Platform	24 inch: SA	24 inch: SA	24 inch: SA
Color	Stainless steel	Stainless steel	Stainless steel
Control types	Mechanical control	Mechanical control	Mechanical control
Cooktop			
Hob type/No. of burner	Gas burner/4	Gas burner/4	Gas burner/4
Ignition	Two-hand electric ignition	Two-hand electric ignition	Two-hand electric ignition
Oven			
Oven type	Gas oven	Gas oven	Gas oven
Cavity			
Enamel interior	●	●	●
Molded rack support	●	●	●
Multi-rack support	●	●	●
Cast iron pan supports	○	○	○
Catalytic liners (irreplaceable)	○	○	○
Cover plate & Oven door			
Glass cover plate/metal cover plate/backsplash	●/-/-	●/-/-	●/-/-
Enamel door	●	●	●
Full glass door	-	-	-
Removable door plate	●	●	●
Convenience and safety			
Mechanical timer/electric timer/digital timer	●/-/-	●/-/-	●/-/-
Pull out drawer/fixed drawer/fold down drawer	-/-/●	-/●/-	-/●/-
Adjustable feet	-	●	●
Oven lamp	●	●	●
Oven thermostat	●	-	-
Flame failure protection	●	-	-
Handle material	Alloy	Painting	Painting
Accessories			
Enamel baking tray	○	○	○
Rotisserie spit	●	●	●
Technical data			
Product dimensions in mm (WxDxH)	600*580*920	600*570*810	600*570*810
Packing dimensions in mm (WxDxH)	655*625*1010	635*575*878	635*575*878
Loading quantity (20'/40'/40 HQ)	54/114/155	72/144/214	72/144/214



Model	30AMG5G001	30AMG5G005	30AMG5G009
Platform	30 inch: SA	30 inch: SA	30 inch: SA
Color	Stainless steel	Stainless steel	Stainless steel
Control types	Mechanical control	Mechanical control	Mechanical control
Cooktop			
Hob type/No. of burner	Gas burner/5	Gas burner/5	Gas burner/5
Ignition	Two-hand electric ignition	Two-hand electric ignition	Two-hand electric ignition
Oven			
Oven type	Gas oven	Gas oven	Gas oven
Cavity			
Enamel interior	●	●	●
Molded rack support	●	●	●
Multi-rack support	●	●	●
Cast iron pan supports	○	○	○
Catalytic liners (irreplaceable)	○	○	○
Cover plate & Oven door			
Glass cover plate/metal cover plate/backsplash	●/-/-	●/-/-	●/-/-
Enamel door	●	●	●
Full glass door	-	-	-
Removable door plate	●	●	●
Convenience and safety			
Mechanical timer/electric timer/digital timer	●/-/-	●/-/-	●/-/-
Pull out drawer/fixed drawer/fold down drawer	-/-/●	-/-/●	-/-/●
Adjustable feet	-	-	●
Oven lamp	●	●	●
Oven thermostat	●	●	●
Flame failure protection	●	●	●
Handle material	Painting	Painting	Bakelite
Accessories			
Enamel baking tray	○	○	○
Rotisserie spit	●	●	●
Technical data			
Product dimensions in mm (WxDxH)	760*580*900	760*580*900	760*580*900
Packing dimensions in mm (WxDxH)	805*605*985	805*605*985	805*605*985
Loading quantity (20'/40'/40 HQ)	50/104/132	50/104/132	50/104/132



Model	30AMG5G027	30AMG5G054	36LMG5G022
Platform	30 inch: SA	30 inch: SA	36 inch: SA (L)
Color	Stainless steel	Stainless steel	Stainless steel
Control types	Mechanical control	Mechanical control	Mechanical control
Cooktop			
Hob type/No. of burner	Gas burner/5	Gas burner/5	Gas burner/5
Ignition	Two-hand electric ignition	Two-hand electric ignition	Two-hand electric ignitio
Oven			
Oven type	Gas oven	Gas oven	Gas oven
Cavity			
Enamel interior	●	●	●
Molded rack support	●	●	●
Multi-rack support	●	●	●
Cast iron pan supports	○	○	○
Catalytic liners (irreplaceable)	○	○	○
Cover plate & Oven door			
Glass cover plate/metal cover plate/backsplash	●/-/-	●/-/-	●/-/-
Enamel door	●	●	●
Full glass door	-	-	-
Removable door plate	●	●	●
Convenience and safety			
Mechanical timer/elctetric timer/digital timer	●/-/-	●/-/-	●/-/-
Pull out drawer/fixed drawer/fold down drawer	-/-/●	-/-/●	-/-/●
Adjustable feet	●	●	●
Oven lamp	●	●	●
Oven thermostat	●	●	●
Flame failure protection	●	●	●
Handle material	Bakelite	Alloy	Stainless steel
Accessories			
Enamel baking tray	○	○	○
Rotisserie spit	●	●	●
Technical data			
Product dimensions in mm (WxDxH)	760*580*900	760*580*920	900*580*769
Packing dimensions in mm (WxDxH)	805*605*985	820*625*1010	936*696*845
Loading quantity (20'/40'/40 HQ)	50/104/132	50/104/127	40/80/120



Model	36LMG5G024	36LMG5G028	36LMG5G030
Platform	36 inch: SA (L)	36 inch: SA (L)	36 inch: SA (L)
Color	Stainless steel/White	Stainless steel	Stainless steel
Control types	Mechanical control	Mechanical control	Mechanical control
Cooktop			
Hob type/No. of burner	Gas burner/5	Gas burner/5	Gas burner/5
Ignition	Two-hand electric ignition	Two-hand electric ignition	Two-hand electric ignition
Oven			
Oven type	Gas oven	Gas oven	Gas oven
Cavity			
Enamel interior	●	●	●
Molded rack support	●	●	●
Multi-rack support	●	●	●
Cast iron pan supports	○	○	○
Catalytic liners (irreplaceable)	○	○	○
Cover plate & Oven door			
Glass cover plate/metal cover plate/backsplash	●/-/-	●/-/-	●/-/-
Enamel door	●	●	●
Full glass door	-	-	-
Removable door plate	●	●	●
Convenience and safety			
Mechanical timer/elctetric timer/digital timer	●/-/-	●/-/-	●/-/-
Pull out drawer/fixed drawer/fold down drawer	-/-/●	-/-/●	-/-/●
Adjustable feet	●	●	●
Oven lamp	●	●	●
Oven thermostat	●	●	●
Flame failure protection	●	●	●
Handle material	Stainless steel	Stainless steel	Stainless steel
Accessories			
Enamel baking tray	○	○	○
Rotisserie spit	●	●	●
Technical data			
Product dimensions in mm (WxDxH)	900*580*769	900*580*769	900*580*769
Packing dimensions in mm (WxDxH)	936*696*845	936*696*845	936*696*845
Loading quantity (20'/40'/40 HQ)	40/80/120	40/80/120	40/80/120

North American Style Freestanding Oven

North American Style Freestanding Oven



30NTG5G070

- Powerful convection
- Gas oven
- 5 gas burners
- 6.1 cu. ft. capacity
- Storage drawer
- Grand view window
- Cooling door system
- Pyrolytic-Self Cleaning/Steam Easy Clean
- IOT connectivity



30NTE5R070

- Powerful convection
- Electric oven
- 5 Electric Ceramic burners
- 6.1 cu. ft. capacity
- Storage drawer
- Grand view window
- Cooling door system
- Pyrolytic-Self Cleaning/Steam Easy Clean
- IOT connectivity



Model	30NTG5G070	30NTE5R070
Platform	30 inch: NA	30 inch: NA
Color	Stainless Steel/ Black Stainless Steel	Stainless Steel/ Black Stainless Steel
Control types	Electrical control	Electrical control
Cooktop		
Hob type/No. of burner	Gas burners /5	Electric Ceramic /5
Ignition	-	-
Oven		
Oven type	Gas oven	Electric oven
Cavity		
Enamel interior	●	●
Molded rack support	●	●
Multi-rack support	●	●
Cast iron pan supports	-	●
Catalytic liners (irreplaceable)	-	-
Cover plate & Oven door		
Glass cover plate/backsplash	-	-
Enamel door	●	●
Full glass door	-	-
Removable door plate	●	●
Convenience and safety		
Mechanical timer/elcteric timer/digital timer	-/-/●	-/-/●
Pull out drawer/fixed drawer/flap down drawer	●/-/-	●/-/-
Adjustable feet	●	●
Oven lamp	●	●
Oven thermostat	●	●
Cooktop flame extinguish protection	●	●
Handle material	Alloy	Alloy
Accessories		
Enamel baking tray	●	●
Rotisserie spit	●	●
Technical data		
Oven dimensions in mm (WxDxH)	758x675x912	760x668x927
Packing dimensions in mm (WxDxH)	888x768x1060	900x780x1170
Loading quantity (20'/40'/40 HQ)	36/75/78	36/75/78