

Product Catalogue

Water/Coffee/Tea Boiler



Water Boiler Series



A1,A2



A2
(cider sticker urn)



A2
(tea sticker urn)



B1,B2



C1,C2
(adjustable thermostat)



E1,E2
(plastic tap)



E1,E2
(polished finish,
brass chrome coating)



E1,E2
(304SS tap/urn)



G1, G2

(metal handle, 201SS bottom)



30~110°C Adjustable thermostat



replaceable element



SS bottom and antislip rubber feet



drip tray

MODEL NO	NOMINAL CAPACITY	20GP	40GP	40HQ	Carton/ Color Box Sizes (MM)
ML-XY	6L	700	1450	1700	600x600x440/4pcs / 290x290x408
ML-XY	8L	656	1364	1600	600x600x465/4pcs / 290x290x440
ML-XY	10L	588	1224	1400	600x600x520/4pcs / 290x290x488
ML-XY	12L	488	1008	1184	690x690x480/4pcs / 335x335x452
ML-XY	16L	448	928	1088	690x690x535/4pcs / 335x335x510
ML-XY	20L	400	828	972	690x690x585/4pcs / 335x335x550
ML-XY	25L	312	644	756	780x390x555/2pcs / 380x380x547
ML-XY	30L	312	644	756	780x390x585/2pcs / 380x380x567
ML-XY	35L	280	580	680	780x390x655/2pcs / 380x380x635

Voltage/Power/Frequency: 110V~240V/950W~2500W/50~60Hz

Capacity: 6/8/10/12/16/20/25/30/35 liters

Structure: Double wall(304SS/201SS or single wall(304S/S or 201S/S)

Foodgrade material: 304S/S or 201S/S top cover, inner pot and bottom.

Heating element: Fixed concealed heating tube or removable concealed heating tube

Surface: Polished finish or brushed finish; gold, blue, black or custom-made sticker pattern

Boiling Temperature: 92°C±3°C built-in thermostat or 30~110°C adjustable thermostat

Anti-dry Protection : 115°C self-cutoff-reset thermostat and 240°C cutoff fuse

Top Cover: Plastic & steel cover or steel cover, with air vent and twist-lock system

Water Tap: Plastic tap or brass chrome coating tap or 304S/S tap

Water Level Gauge: Visible built-in flat type or visible glass tube type

Carry Handles: Plastic type or metal type, both with cool touch

Power Cord: 100% copper core wire, visible length is not less than 1.3 meter.

Others: On-off switch with pilot light, heating & keep warm indicator lights, removable drip tray

Coffee Boiler Series



A1-C;A2-C

(blue color painted)



A1-C;A2-C

(gold color painted)



A1-C;A2-C

(red color painted)



E1-C;E2-C

(waterproof switch)



G1-C;G2-C

(complete steel)



E1-C;E2-C

(304SS tap)





(304SS Coffee basket & pod & dome)



(aluminum element)



(201SS bottom & metal handle)



(304SS holder)

MODEL NO	NOMINAL CAPACITY	20GP	40GP	40HQ	Carton/ Color Box Sizes (MM)
ML-XY-C	6L/30	700	1450	1700	600x600x440/4pcs / 290x290x408
ML-XY-C	8L/40	656	1364	1600	600x600x465/4pcs / 290x290x440
ML-XY-C	10L/50	588	1224	1400	600x600x520/4pcs / 290x290x488
ML-XY-C	12L/60	488	1008	1184	690x690x480/4pcs / 335x335x452
ML-XY-C	16L/100	448	928	1088	690x690x535/4pcs / 335x335x510
ML-XY-C	20L/120	400	828	972	690x690x585/4pcs / 335x335x550
ML-XY-C	25L/140	312	644	756	780x390x555/2pcs /380x380x547
ML-XY-C	30L/160	312	644	756	780x390x585/2pcs /380x380x567
ML-XY-C	35L/180	280	580	680	780x390x655/2pcs / 380x380x635

Voltage/Power/Frequency: 110V~240V/950W~2000W/50~60Hz

Capacity: 30/40/50/60/100/120/140/160/180cups

Structure: Double wall(304SS/201SS) or single wall(304S/S)

Foodgrade material: 304S/S coffee basket,rod,dome;inner pot,top cover and bottom

Heating element: Removable aluminum element

Surface Finish: Polished (mirror) or brushed(dull polished)

Boiling Temperature Control: Built-in 88°C±3°C thermostat or 30~110°C adjustable thermostat

Keep Warm Control: To use built-in low power element or adjustable thermostat to keep coffee hot

Anti-dry Protection : 175°C self-cutoff-reset thermostat and 240°C cutoff fuse

Top Cover: Plastic & steel cover or steel cover, with air vent and twist-lock system

Water Tap: Plastic tap or brass chrome coating tap or 304S/S tap

Water Level Gauge: Visible built-in flat type or visible glass tube type

Carry Handles: Plastic type or metal type, both with cool touch

Power Cord: 100% copper core wire, visible length is not less than 1.3 meter

Power Switch: On-off switch with pilot light or on-off high-quality waterproof switch

Others: Heating & keep warm indicator lights, removable drip tray

Tea Boiler Series



A1-T;A2-T



E1-T;E2-T



C1-T;C2-T



G1-T1;G2-T1



G1-T1;G2-T1



G1-T2;G2-T2



PRODUCT FEATURES



- 70,80,90,100°C option
- Luxury digital display
- Reboil function



(304 tea pot,tea basket)

MODEL NO	NOMINAL CAPACITY	POWER	20GP	40GP	40HQ	Carton/ Color Box Sizes (MM)
ML-XY-T	6L	1600W	700	1450	1700	600x600x440/4pcs / 290x290x408
ML-XY-T	8L	1600W	656	1364	1600	600x600x465/4pcs / 290x290x440
ML-XY-T	10L	1600W	588	1224	1400	600x600x520/4pcs / 290x290x488
ML-XY-T	12L	1600W	488	1008	1184	690x690x480/4pcs / 335x335x452
ML-XY-T	16L	1600W	448	928	1088	690x690x535/4pcs / 335x335x510
ML-XY-T	20L	1600W	400	828	972	690x690x585/4pcs / 335x335x550
ML-XY-T	25L	2500W	312	644	756	780x390x555/2pcs /380x380x547
ML-XY-T	30L	2500W	312	644	756	780x390x585/2pcs /380x380x567
ML-XY-T	35L	2500W	280	580	680	780x390x655/2pcs / 380x380x635

Voltage/Power/Frequency: 220V~240V/1600W~2500W/50~60Hz

Capacity: 6/8/10/12/16/20/25/30/35 liters

Structure: Double wall(304SS/201SS) or single wall(304S/S)

Foodgrade material: 304S/S tea pot,tea basket,top cover, water pot and bottom.

Heating element: Fixed concealed heating tube or removable concealed heating tube

Surface: Polished finish or brushed finish or custom-made sticker pattern

Boiling Temperature Control: 30~110°C adjustable thermostat or digital display with temp options

Anti-dry Protection: 115°C self-cutoff-reset thermostat and 240°C cutoff fuse

Top Cover: Plastic & steel cover or steel cover, with air vent and twist-lock system

Two Water Taps: Plastic tap or brass chrome coating tap or 304S/S tap

Two Water Level Gauges: Visible built-in flat type or visible glass tube type

Carry Handles: Plastic type or metal type, with cool touch

Power Cord: 100% copper core wire, visible length is not less than 1.3 meter.

Others: On-off switch with pilot light, heating & keep warm indicator lights, removable drip tray

Shabbat Water Boiler



double switch with pilot light



lock system to pass SII drop test



C1-S;C2-S



F1-S;F2-S

Voltage/Power/Frequency: 110V~240V/950-1600W/50~60Hz

Capacity: 6/8/10/12 liters or 30/40/50/60 cups

Structure: Double wall(304SS/201SS) or single wall(304S/S)

Foodgrade material: 304S/S top cover, inner pot and bottom.

Heating element: Fixed concealed heating tube

Surface: Polished finish or brushed finish

Boiling Temperature Control: Built-in 92°C±3°C fixed thermostat

Keep Warm(Shabbat Mode): built-in 120W Element keeps the water hot at 90°C without reboiling over 24 hours

Anti-dry Protection : 115°C self-cutoff-reset thermostat and 240°C cutoff fuse

Top Cover: Plastic & steel cover or steel cover, with air vent and **double lock system to pass SII drop test**

Water Level Gauge & Tap: Visible built-in water gauge with plastic tap or 304S/S tap

Carry Handles: Plastic type with cool touch

Power Cord: 100% copper core wire, visible length is not less than 1.3 meter.

Power Switch: Heating/keep warm(shabbat)double switch with pilot light.

MODEL NO	LITER/CUP	POWER	COLOR BOX SIZE(MM)	CARTON SIZE(MM)	20GP	40GP	40HQ
ML-XY	6L	1600W	295x295x408	610x610x435/4PCS	700	1450	1700
ML-XY	8L	1600W	295x295x440	610x610x465/4PCS	656	1364	1600
ML-XY	10L	1600W	295x295x488	610x610x515/4PCS	588	1224	1400
ML-XY	12L	1600W	340x340x452	700x700x480/4PCS	488	1008	1184

Luxury Digital Display Tea Boiler



20L



30L



10L



Optional glass lid

Top view

Digital display



ODM project for



Urn

owned by



5L



10L

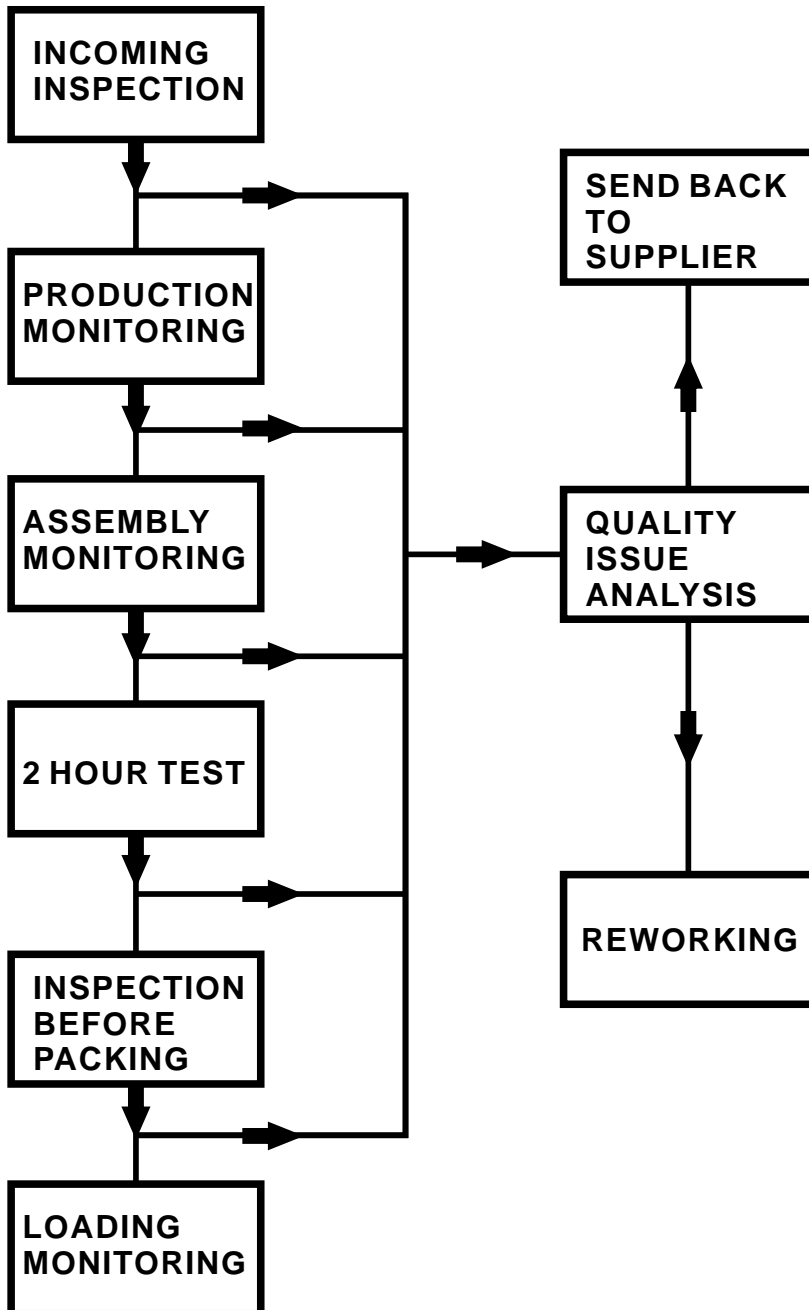


20L



30L

Birko Urn QC Flow Chart



FAQ

1. **Q:**Can I print logo or pictures on the products?

A: Of course,we will do as your requirements to show the logo or picture you need to print.

2. **Q:**Can I customize the packing?

A:Yes,we can sustomize the packing as you request.

3. **Q:**Can I get a free sample for evaluation before order?

A: If the sample value below \$20 we can provide freely,but freight collect.

4. **Q:** How about your delivery time for the OEM order?

A: Usually our delivery time is about 35-50days accordinig the order QTY.

5. **Q:** Can I mix several models of electric kettle together in a container?

A: Yes,usually one 20'FT container can mix 2 models for trial order,and one 40'HQ container can mix at most 4 models.

6. **Q:**What certification can you provide?

A: CB,CE,GS,SAA,SASO,ROHS and LFGB are available here.

COOPERATION PARTNERS



HYUNDAI



TIROSS[®]



LIMAX
HOME APPLIANCES *my life*



salton[®]